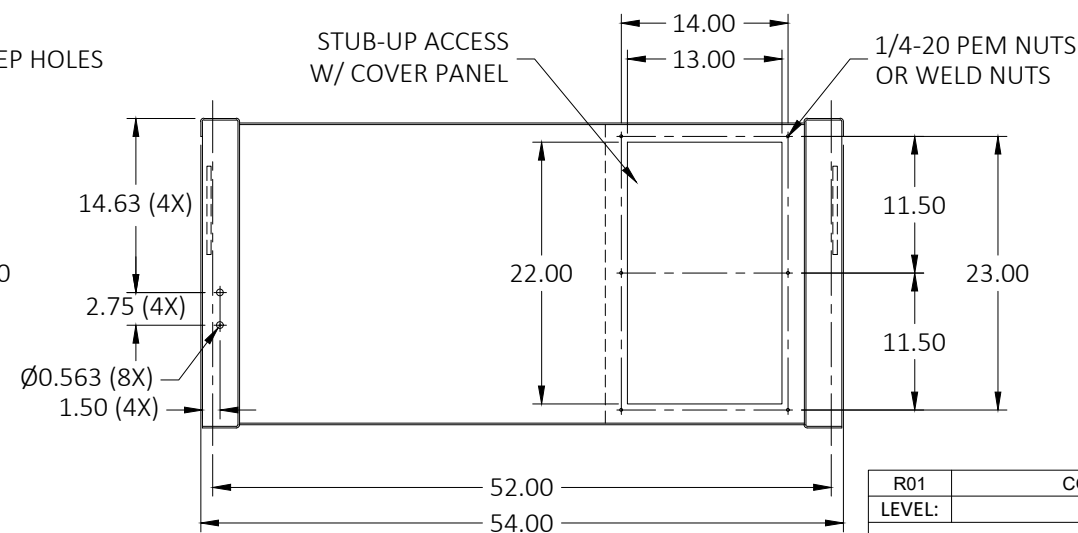
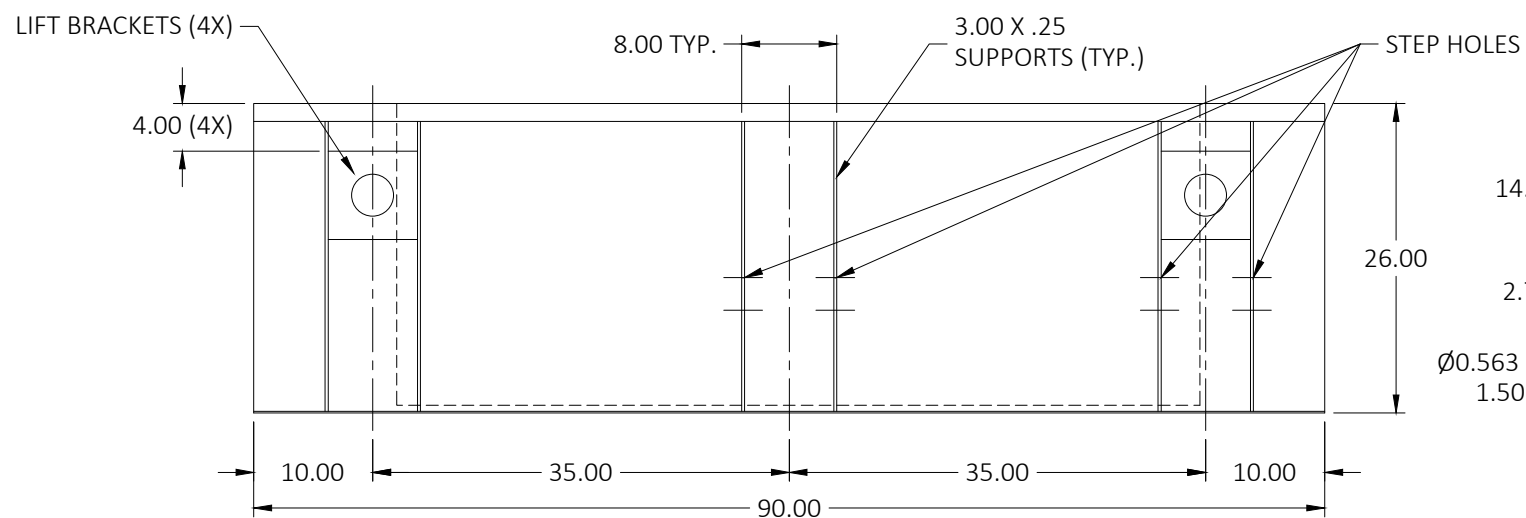
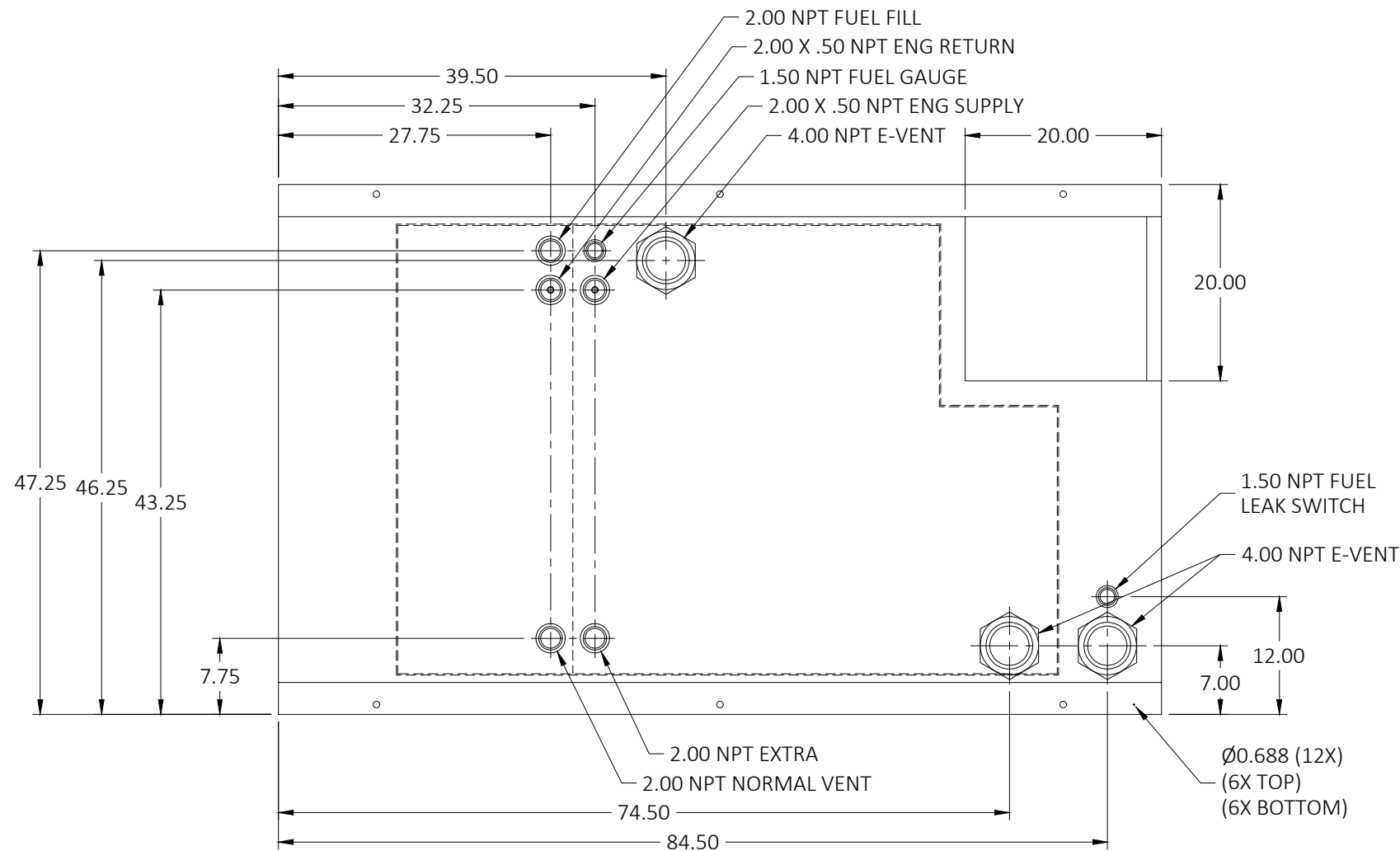


48HR / 300GL FUEL TANK  
 JD60-04FT4, JD80-03FT4  
 LV0 / LV1 / LV2 / LV3

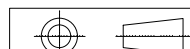


NOTES:

- MATERIAL: PER UL/ULC REQUIREMENTS
- SECONDARY CONTAINMENT TANK
- TANK TO INCLUDE:
  - FUEL SUPPLY/RETURN DIP TUBES
  - LIFTING/TIE-DOWN BRACKETS

MATERIAL: SEE NOTES

FINISH: BLACK HAMMERED



REMOVE ALL BURRS AND SHARP EDGES

TOLERANCE UNLESS OTHER SPECIFIED:

FRACTIONAL: ± 1/32  
 ANGULAR: ± 1'  
 X.X = ± .1  
 X.XX = ± .03  
 X.XXX = ± .010

DIMENSIONS ARE IN INCHES

DO NOT SCALE DRAWING

R01	CONVERT TO SOLIDWORKS (3D)	01-12-22	CRC
LEVEL:	DESCRIPTION:	DATE:	BY:

REVISIONS:

THE INFORMATION CONTAINED IN THIS DRAWING IS THE SOLE PROPERTY OF BLUE STAR POWER SYSTEMS, INC. ANY REPRODUCTION, IN PART OR AS A WHOLE, WITHOUT THE WRITTEN PERMISSION IS PROHIBITED.



TANK SB 300GL DW SC UL/ULC W/ STUB-UP

NAME	DATE	SIZE	PART NUMBER:
CRC	12-06-22	B	28229
APPROVED:	CRC	SCALE: NONE	APPROX. WEIGHT: 1,250 LBS
DATE:	12-06-22		SHEET 1 OF 1