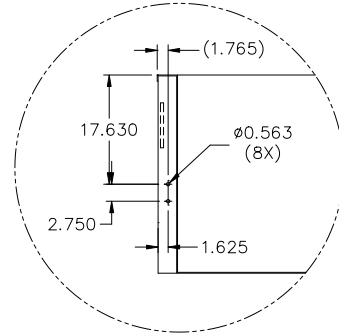
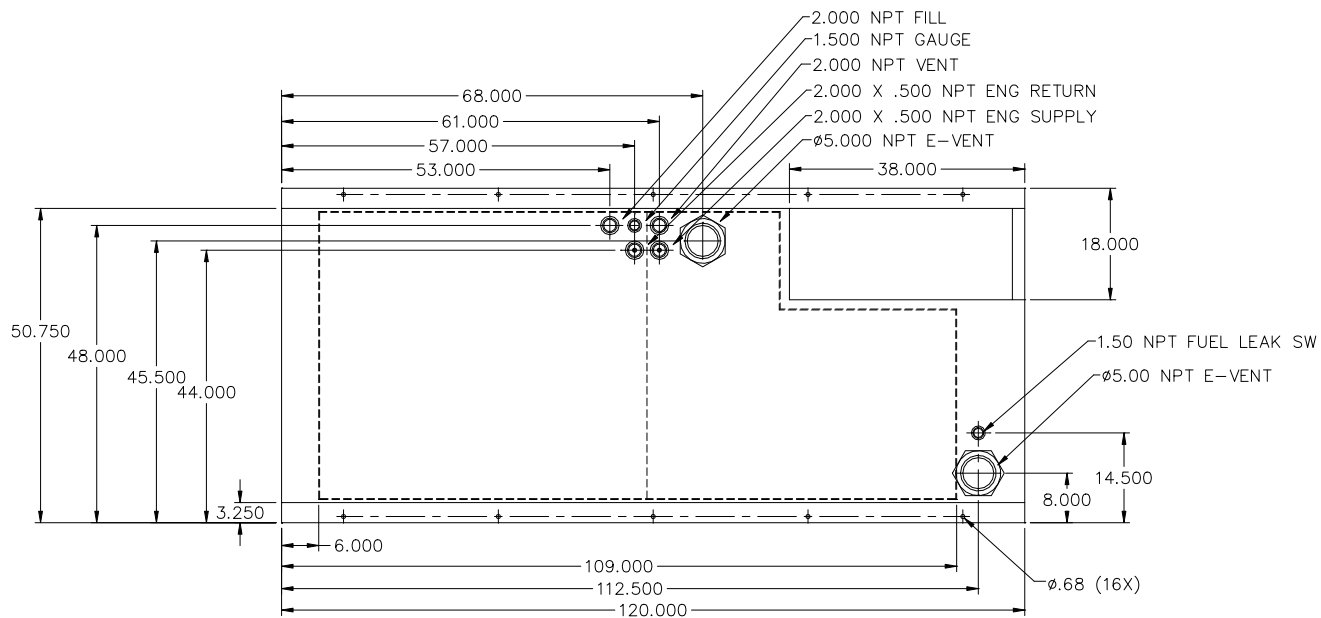
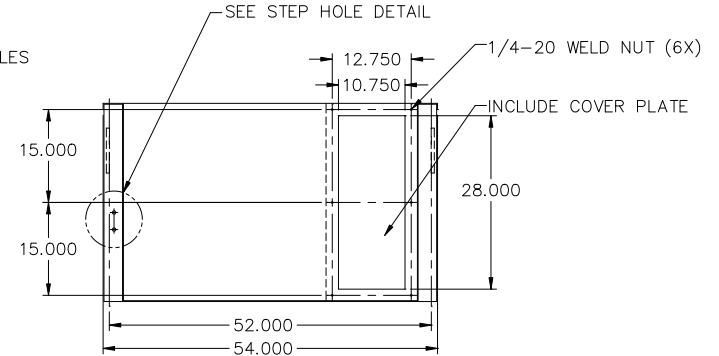
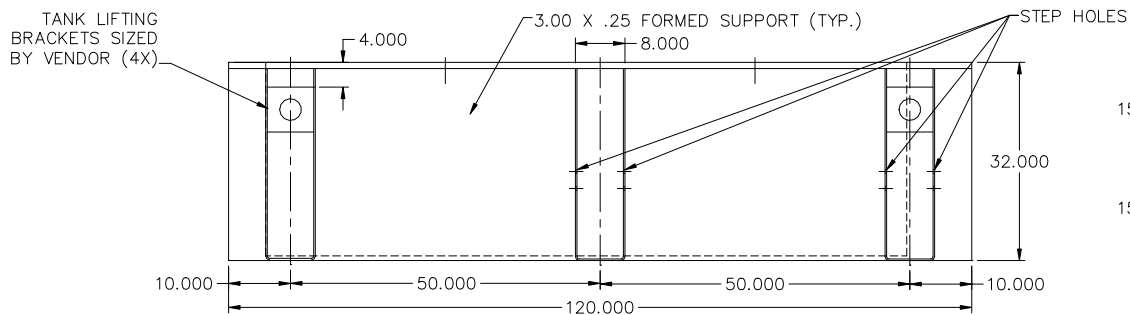


**24HR TANK
JD250, JD275
LV0/LV1/LV2
LEGACY**



STEP HOLE DETAIL



- NOTES:
1. MATERIAL: 10GA
2. SECONDARY CONTAINMENT TANK
3. FINISH PAINT GLOSS BLACK
4. TANK TO INCLUDE
- FUEL SUPPLY / RETURN DIP TUBES
- LIFTING / TIE DOWN BRACKETS

APPROXIMATE WEIGHT: 1800LBS

REVISIONS:

LEVEL:	DESCRIPTION:	DATE:	BY:
NA	NA	NA	NA



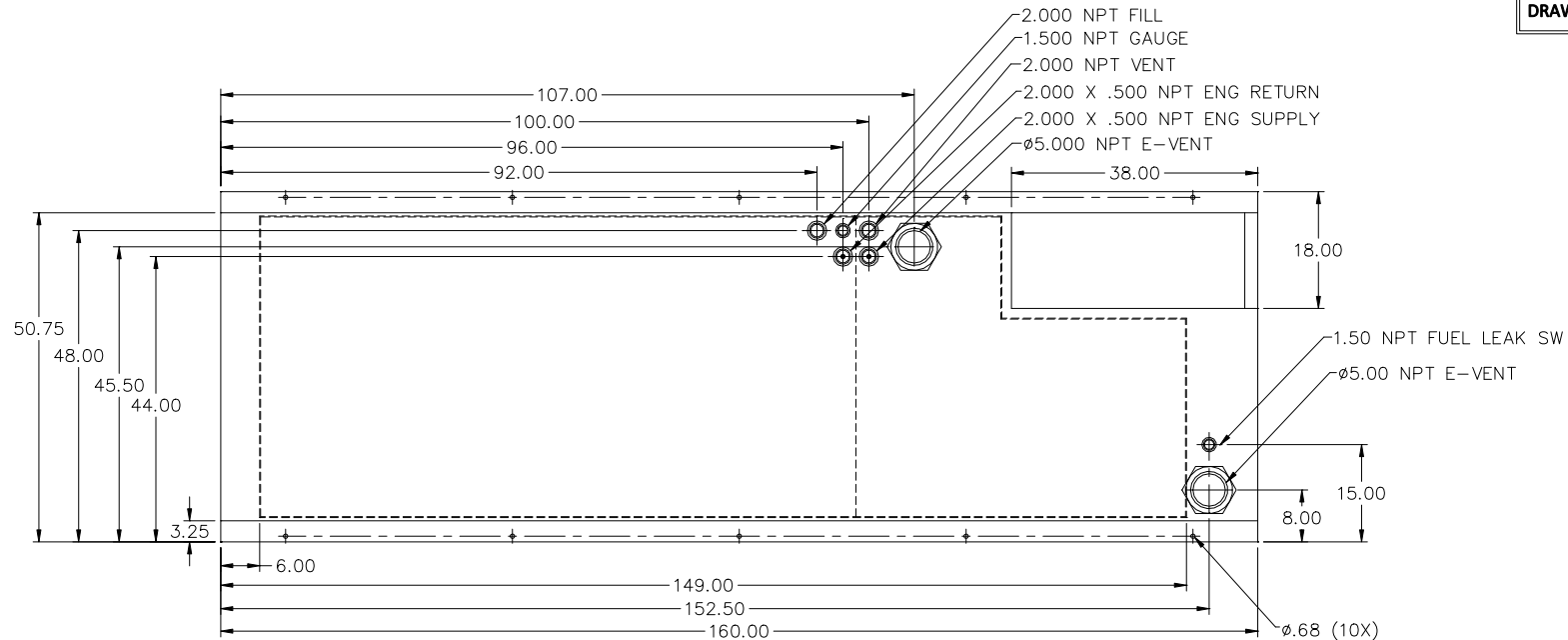
TANK SB 540GL DW UL W/STUB-UP

P/N: 19780	120"L X 54"W X 32"H
DATE: 01-05-15	BY: KAP DRAWN TO SCALE

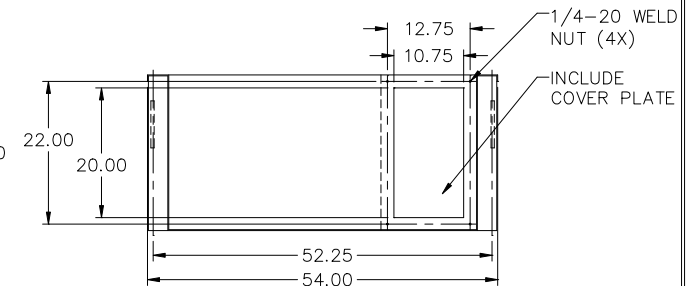
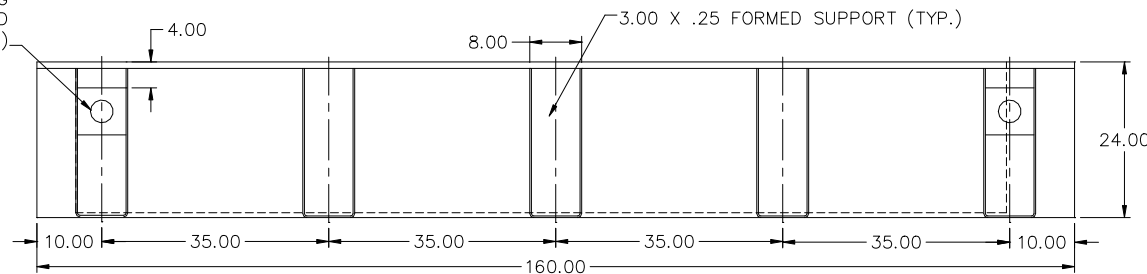
DRAWING:

3-0456

24HR TANK
JD250, JD275
LV3
LEGACY



TANK LIFTING
 BRACKETS SIZED
 BY VENDOR (4X)



NOTES:

1. MATERIAL: 10GA
2. SECONDARY CONTAINMENT TANK
3. FINISH PAINT GLOSS BLACK
4. TANK TO INCLUDE
 - FUEL SUPPLY / RETURN DIP TUBES
 - LIFTING / TIE DOWN BRACKETS

APPROXIMATE WEIGHT: 1900LBS

REVISIONS:

LEVEL:	DESCRIPTION:	DATE:	BY:
NA	NA	NA	NA

BLUE STAR
 Power Systems Inc.

TANK SB 540GL DW UL W/STUB-UP

P/N: 20189 160"L X 54"W X 24"H

DATE: 01-05-16 BY: KAP DRAWN TO SCALE