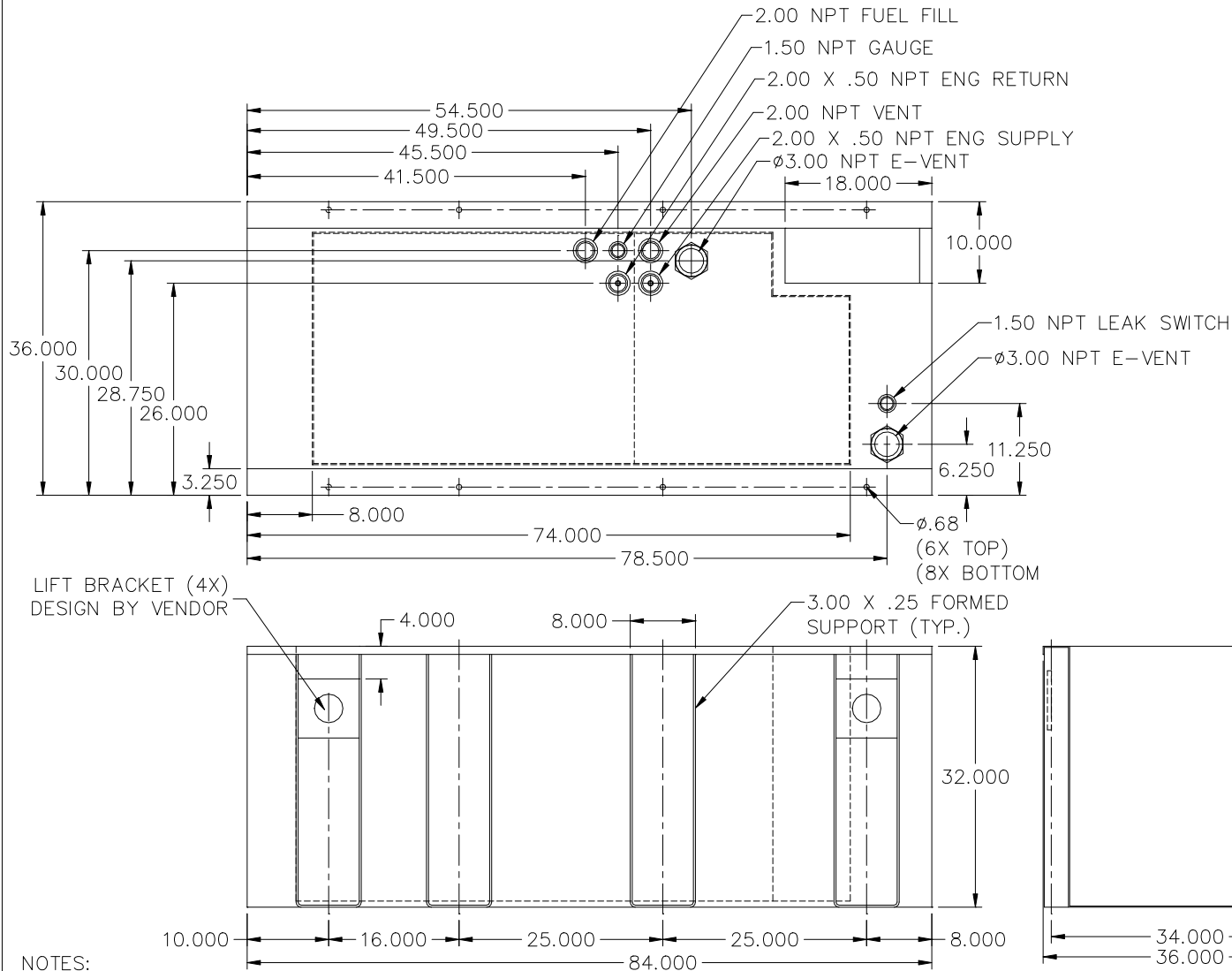


**72HR. TANK
JD30 (IT4)
LV0/LV1/LV2/LV3**



NOTES:

1. MATERIAL: 10GA
2. SECONDARY CONTAINMENT TANK
3. FINISH PAINT GLOSS BLACK
4. TANK TO INCLUDE
 - FUEL SUPPLY / RETURN DIP TUBES
 - LIFTING / TIE DOWN BRACKETS

APPROXIMATE WEIGHT: 1000 LBS

REVISIONS:

LEVEL:	DESCRIPTION:	DATE:	BY:
NA	NA	NA	NA

BLUE STAR
Power Systems Inc.

TANK SB 210GL DW UL W/STUB-UP

P/N: NA 84" L X 36" W X 32" H

DATE: 12-21-15

BY: KDH

DRAWN TO SCALE