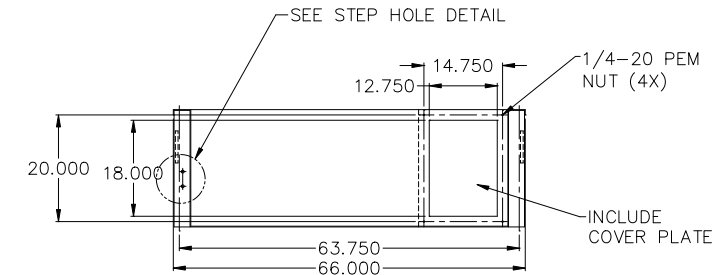
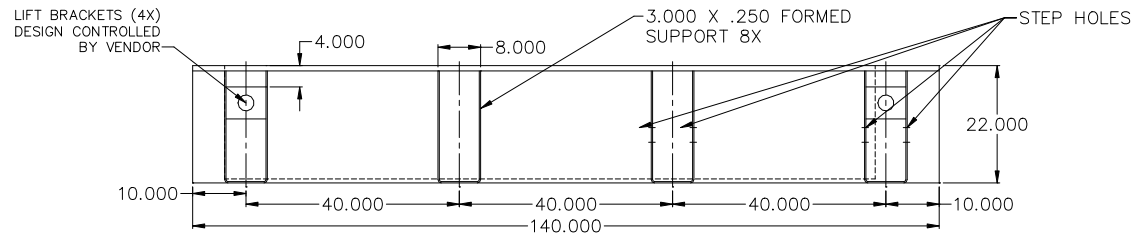
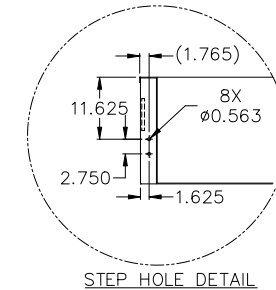
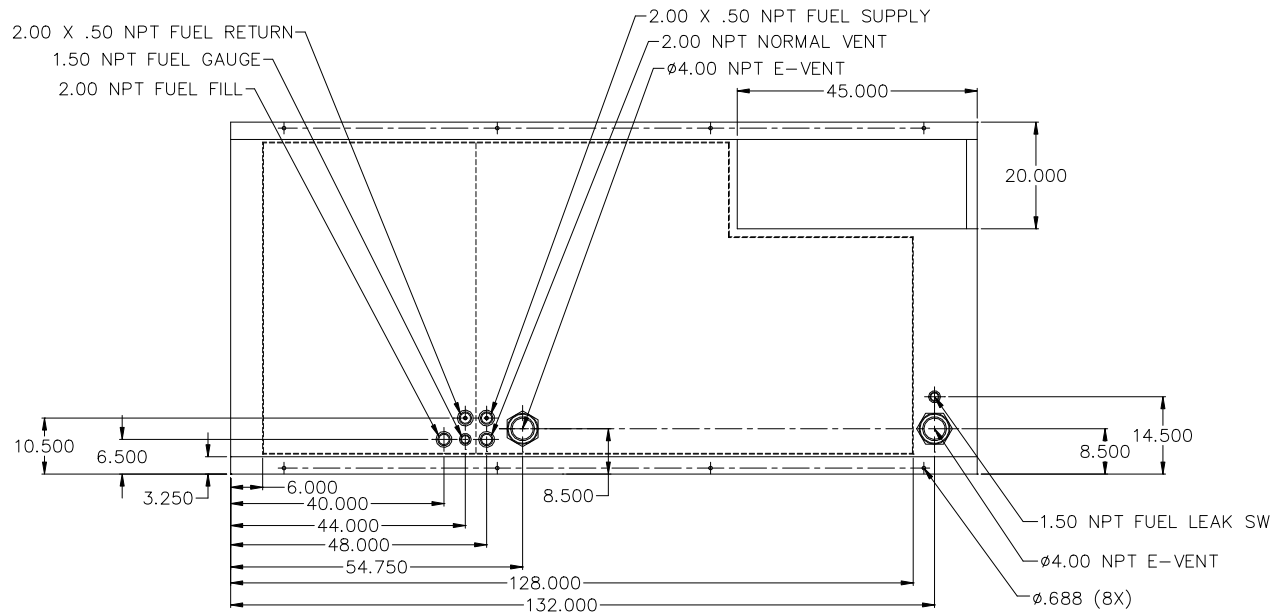


**24HR TANK  
JD300  
LV0/LV1/LV2**



APPROXIMATE WEIGHT: 1850LBS

## NOTES:

1. MATERIAL: 10GA
2. SECONDARY CONTAINMENT TANK
3. FINISH PAINT GLOSS BLACK
4. TANK TO INCLUDE
  - FUEL SUPPLY / RETURN DIP TUBES
  - LIFTING / TIE DOWN BRACKETS

## REVISIONS:

LEVEL:	DESCRIPTION:	DATE:	BY:
NA	NA	NA	NA

**BLUE STAR**  
Power Systems Inc.

TANK SB 540GL DW UL W/STUB-UP

P/N: NA 140"L X 66"W X 22"H

DATE: 01-05-16

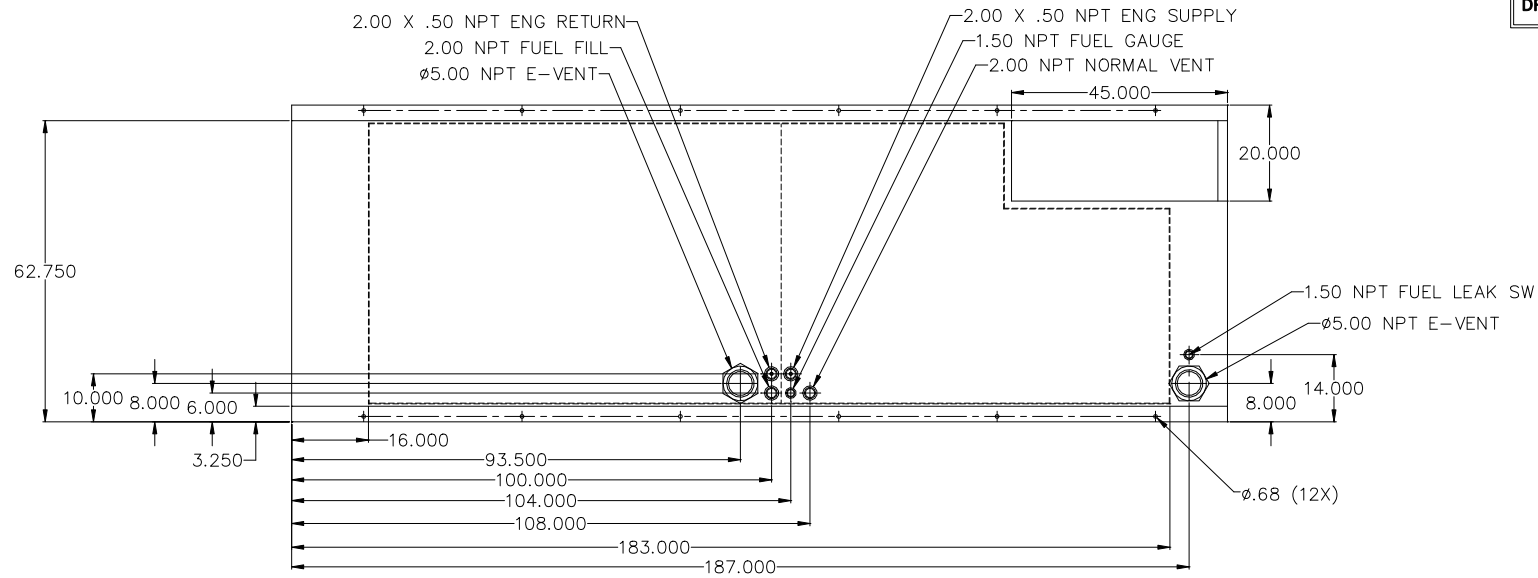
BY: KDH

DRAWN TO SCALE

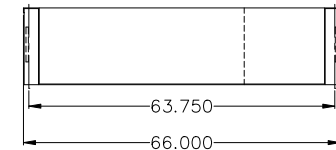
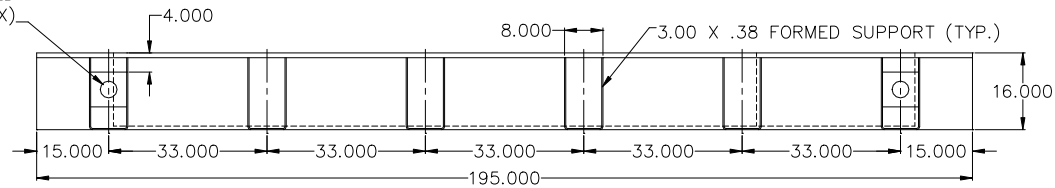
DRAWING:

3-0458

**24HR TANK  
JD300  
LV3  
LEGACY**



TANK LIFTING  
BRACKETS SIZED  
BY VENDOR (4X)



## NOTES:

1. MATERIAL: 7GA RUPTURE BASIN  
10GA INNER TANK
2. SECONDARY CONTAINMENT TANK
3. FINISH PAINT GLOSS BLACK
4. TANK TO INCLUDE
  - FUEL SUPPLY / RETURN DIP TUBES
  - LIFTING / TIE DOWN BRACKETS

APPROXIMATE WEIGHT: 2500LBS

## REVISIONS:

LEVEL:	DESCRIPTION:	DATE:	BY:
NA	NA	NA	NA

**BLUE STAR**  
Power Systems Inc.

TANK SB 540GL DW UL W/STUB-UP

P/N: NA 195"L X 66"W X 16"H

DATE: 01-05-16

BY: KDH

DRAWN TO SCALE