

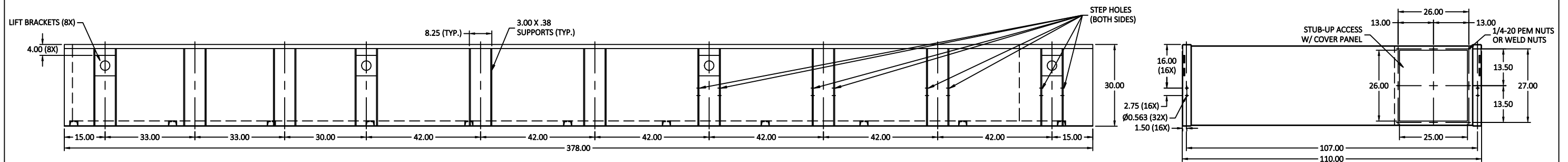
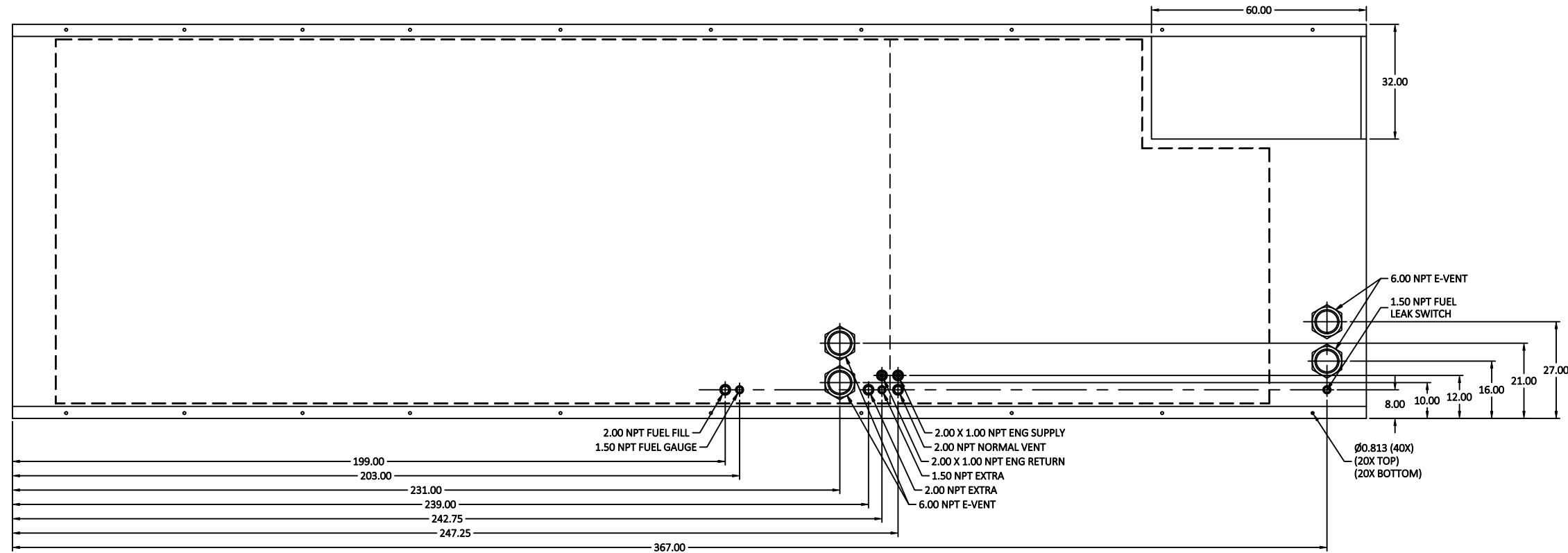
DRAWING:

18027

24HR / 3,850GL FUEL TANK

MD1600-01, MD2000-01

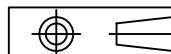
LV3



R06	MOVED E-VENTS 5" TOWARDS FRONT & ADDED 2" TO TANK HEIGHT & STEPS BOTH SIDES	09-19-23	RPS
R05	ADDED 2 LIFTING BRACKETS	07/29/20	CRC
R04	CONVERT TO SOLIDWORKS & SHORTENED STUB-UP BY 3"	06-26-20	CRC
R03	ADDED ULC TO TANK DESCRIPTION	01-20-20	MGH
R02	MOVED FITTINGS	08-03-17	KAP
R01	MOVED VENTS, ADJUSTED INNER TANNK	02-09-16	KAP
LEVEL:	DESCRIPTION:	DATE:	BY:

REVISIONS:

THE INFORMATION CONTAINED IN THIS DRAWING IS THE SOLE PROPERTY OF BLUE STAR POWER SYSTEMS, INC. ANY REPRODUCTION, IN PART OR AS A WHOLE, WITHOUT THE WRITTEN PERMISSION IS PROHIBITED.



REMOVE ALL BURRS AND SHARP EDGES

TOLERANCE UNLESS OTHER SPECIFIED:

FRACTIONAL: ± 1/32
 ANGULAR: ± 1°
 XX = ± .1
 XXX = ± .03
 XXXX = ± .010

BLUE STAR
 Power Systems Inc.
 2250 CARLSON DRIVE, NORTH MANKATO, MINNESOTA 56003 | 1 507 345 1776

TANK SB 3850GL DW SC UL/ULC W/ STUB-UP

NAME	DATE	SIZE	PART NUMBER:
DRAWN BY: CRC	12-13-22	B	18027

APPROVED: CRC	12-13-22	SCALE: NONE	APPROX. WEIGHT: 11,700 LBS	SHEET 1 OF 1
---------------	----------	-------------	----------------------------	--------------

- NOTES:
- MATERIAL: PER UL/ULC REQUIREMENTS
 - SECONDARY CONTAINMENT TANK
 - TANK TO INCLUDE:
 - FUEL SUPPLY/RETURN DIP TUBES
 - LIFTING/TIE DOWN BRACKETS

MATERIAL: SEE NOTES

FINISH: BLACK HAMMERED

DO NOT SCALE DRAWING