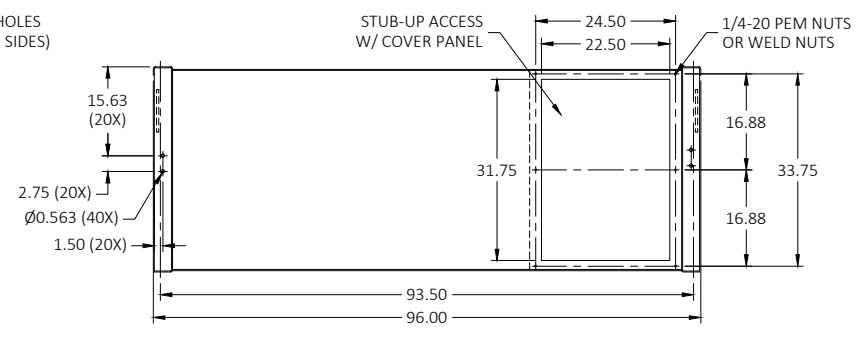
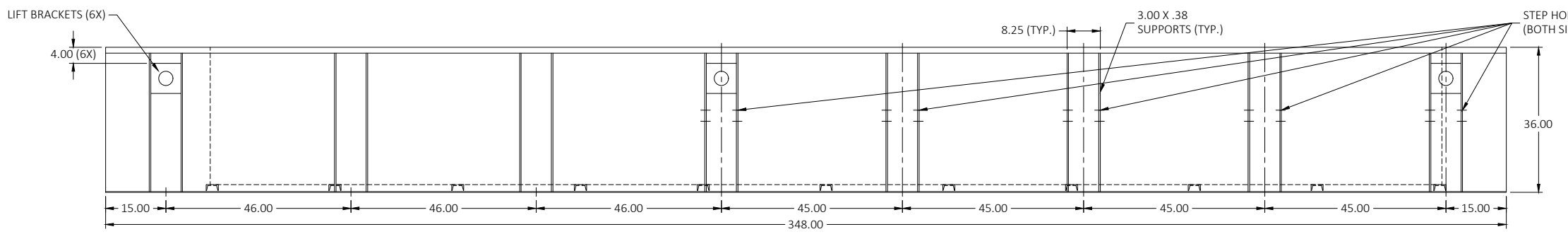
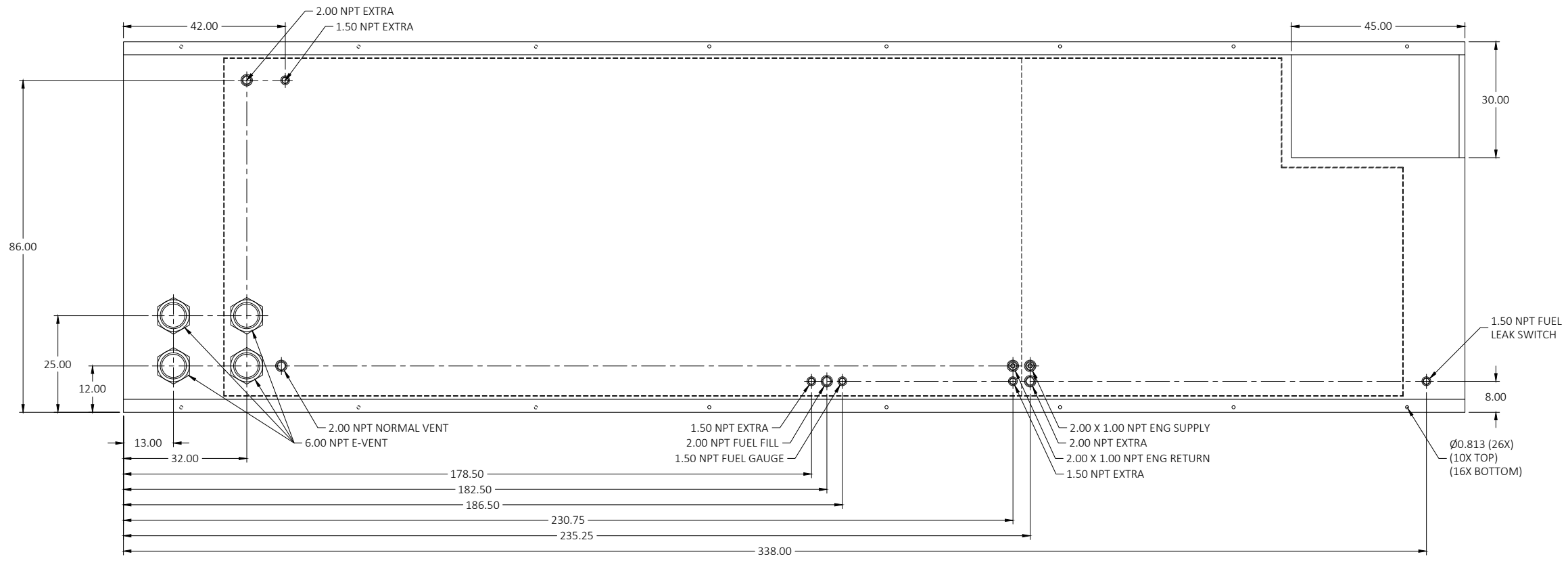


48HR / 3,600GL FUEL TANK
 MD800-01, MD1000-01
 LV0 / LV1 / LV2



- NOTES:
1. MATERIAL: PER UL/ULC REQUIREMENTS
 2. SECONDARY CONTAINMENT TANK
 3. TANK TO INCLUDE:
 - FUEL SUPPLY/RETURN DIP TUBES
 - LIFTING/TIE DOWN BRACKETS

MATERIAL: SEE NOTES FINISH: BLACK HAMMERED

REMOVE ALL BURRS AND SHARP EDGES

TOLERANCE UNLESS OTHER SPECIFIED:

FRACTIONAL: ± 1/32
 ANGULAR: ± 1°
 X.X = ± .1
 X.XX = ± .03
 X.XXX = ± .010

DIMENSIONS ARE IN INCHES

DO NOT SCALE DRAWING

R05	ADDED 1.50 & 2.00 NPT FITTINGS	01-05-23	CRC
LEVEL:	DESCRIPTION:	DATE:	BY:
REVISIONS:			
THE INFORMATION CONTAINED IN THIS DRAWING IS THE SOLE PROPERTY OF BLUE STAR POWER SYSTEMS, INC. ANY REPRODUCTION, IN PART OR AS A WHOLE, WITHOUT THE WRITTEN PERMISSION IS PROHIBITED.			
2250 CARLSON DRIVE, NORTH MANKATO, MINNESOTA 56003 1 507 345 1776			
TANK SB 3600GL DW SC UL/ULC W/ STUB-UP			
	NAME	DATE	SIZE PART NUMBER:
DRAWN BY:	CRC	12-12-22	B 20924
APPROVED:	CRC	12-12-22	SCALE: NONE APPROX. WEIGHT: 10,800 LBS SHEET 1 OF 1

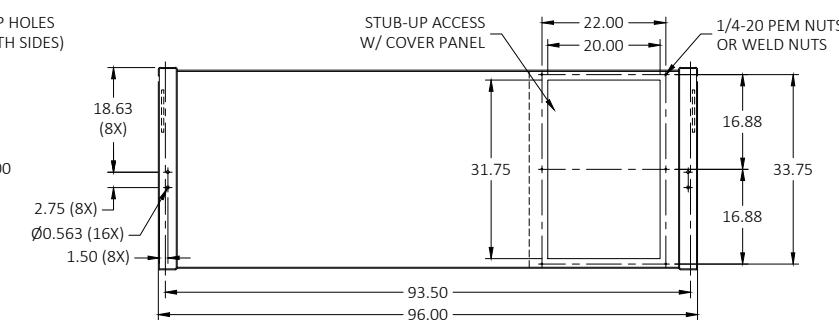
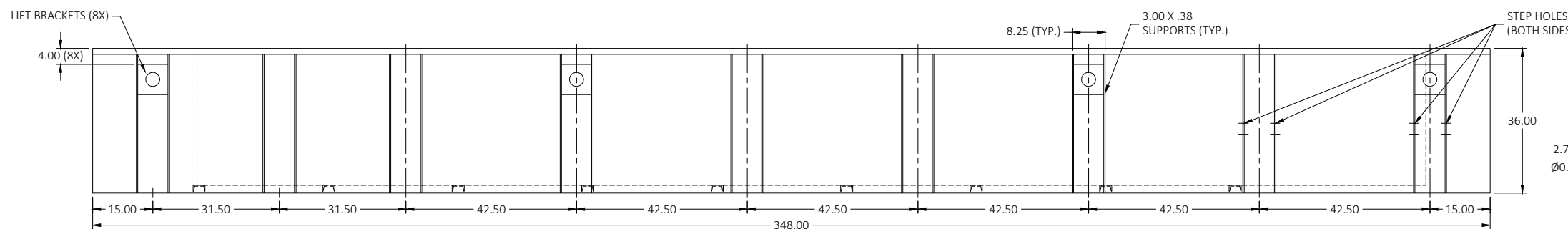
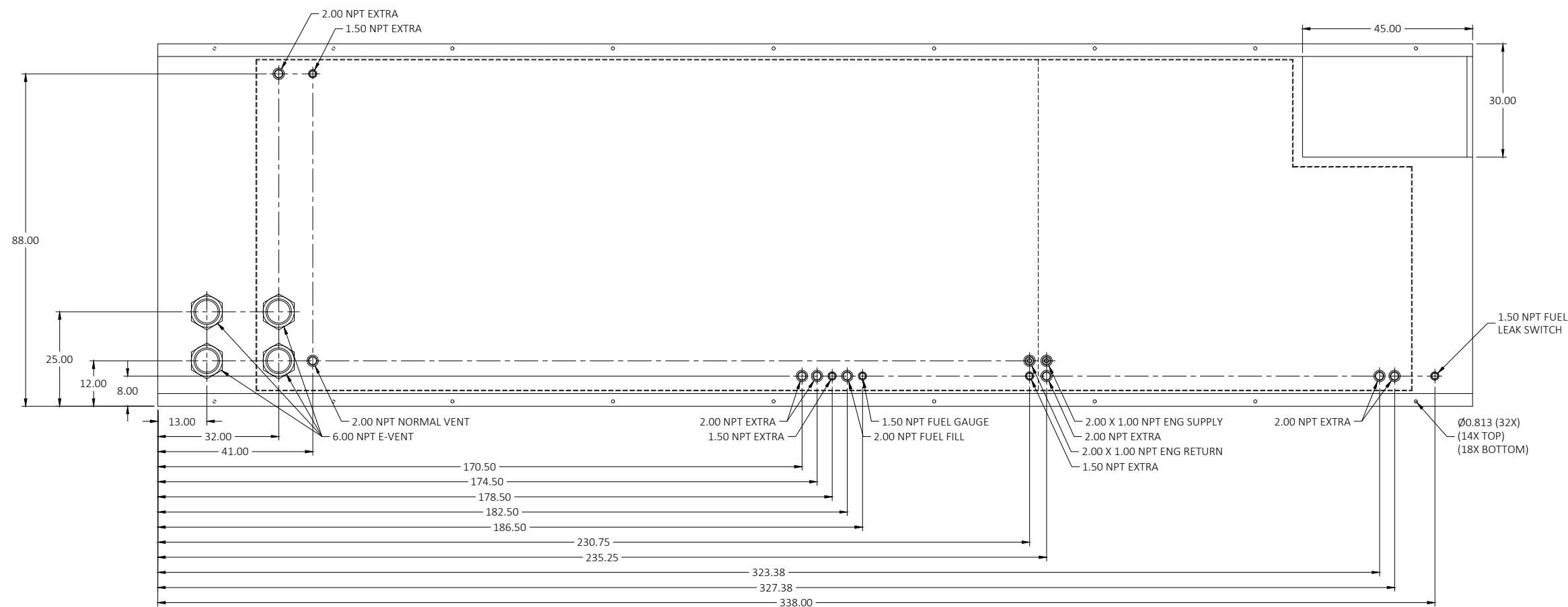
DRAWING:

19727

48HR / 3,600GL FUEL TANK

MD800-01, MD1000-01

LV3



NOTES:

1. MATERIAL: PER UL/ULC REQUIREMENTS
2. SECONDARY CONTAINMENT TANK
3. TANK TO INCLUDE:
-FUEL SUPPLY/RETURN DIP TUBES
-LIFTING/TIE DOWN BRACKETS

REMOVE ALL BURRS AND SHARP EDGES

TOLERANCE UNLESS OTHER SPECIFIED:

FRACTIONAL: ± 1/32
ANGULAR: ± 1°
X.X = ± .1
X.XX = ± .03
X.XXX = ± .010

DIMENSIONS ARE IN INCHES

DO NOT SCALE DRAWING

R06	ADDED (4X) 2.00 NPT EXTRA FITTINGS	06-08-21	MGH
LEVEL:	DESCRIPTION:	DATE:	BY:
REVISIONS:			
<p>THE INFORMATION CONTAINED IN THIS DRAWING IS THE SOLE PROPERTY OF BLUE STAR POWER SYSTEMS, INC. ANY REPRODUCTION, IN PART OR AS A WHOLE, WITHOUT THE WRITTEN PERMISSION IS PROHIBITED.</p> <p>BLUE STAR Power Systems Inc. 2250 CARLSON DRIVE, NORTH MANKATO, MINNESOTA 56003 1 507 345 1776</p> <p>TANK SB 3600GL DW SC UL/ULC W/ STUB-UP</p>			
NAME	DATE	SIZE	PART NUMBER:
DRAWN BY: CRC	12-12-22	B	19727
APPROVED: CRC	12-12-22	SCALE: NONE	APPROX. WEIGHT: 10,900 LBS

MATERIAL: SEE NOTES

FINISH: BLACK HAMMERED

SHEET 1 OF 1