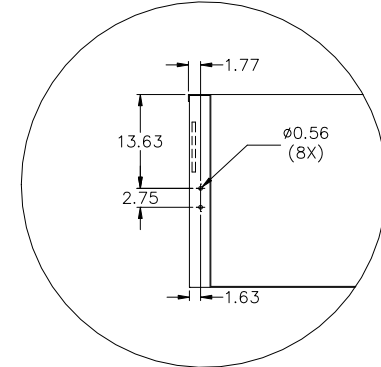
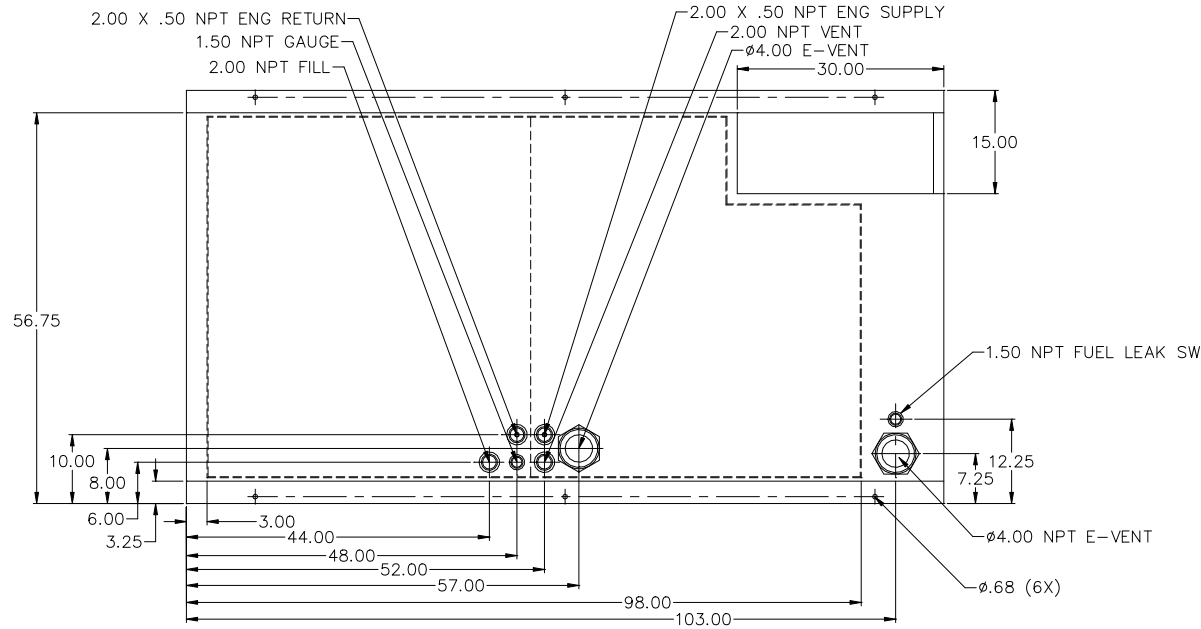
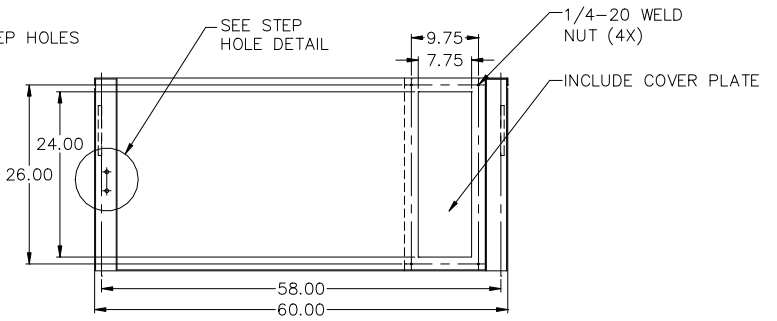
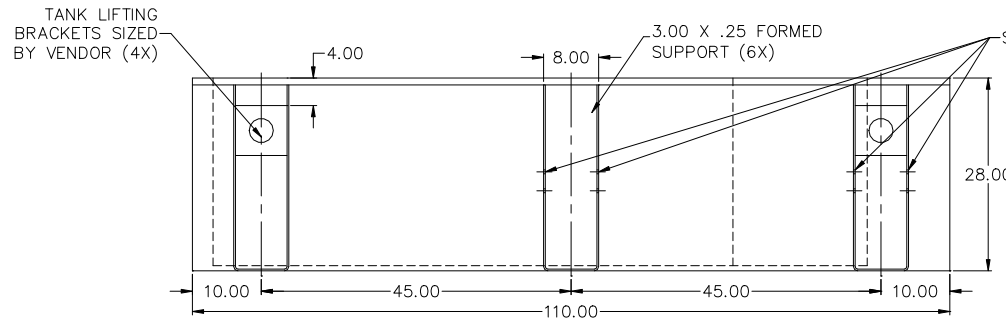


**48HR TANK
VD100, VD125 (FT4)
LV0/LV1/LV2/LV3**



STEP HOLE DETAIL



APPROXIMATE WEIGHT: 1600 LBS

NOTES:

1. MATERIAL: 10GA
2. SECONDARY CONTAINMENT TANK
3. FINISH PAINT GLOSS BLACK
4. TANK TO INCLUDE
 - FUEL SUPPLY / RETURN DIP TUBES
 - LIFTING / TIE DOWN BRACKETS

BLUE STAR
Power Systems Inc.

TANK SB 500GL DW UL W/STUB-UP

P/N: **NA** **110"L X 60"W X 28"H**

DATE: **12-21-15** BY: **KDH** DRAWN TO SCALE