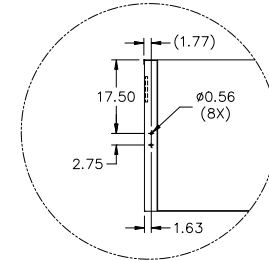
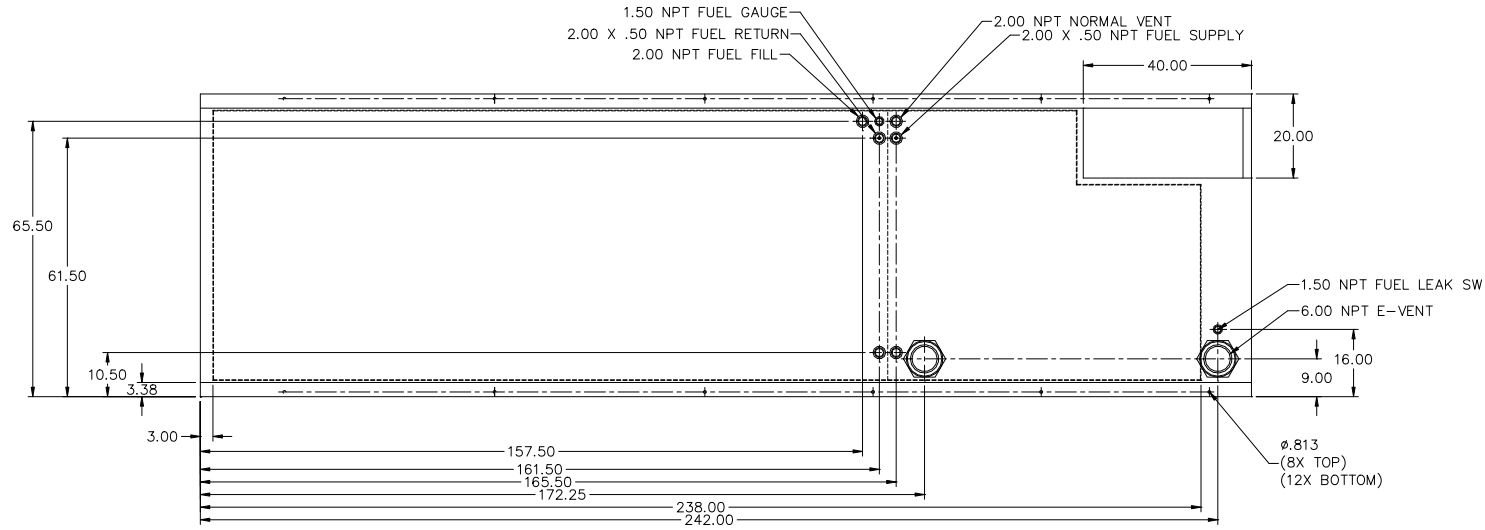


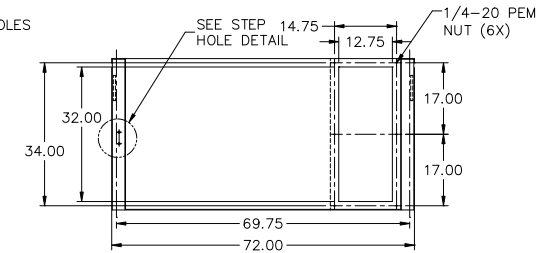
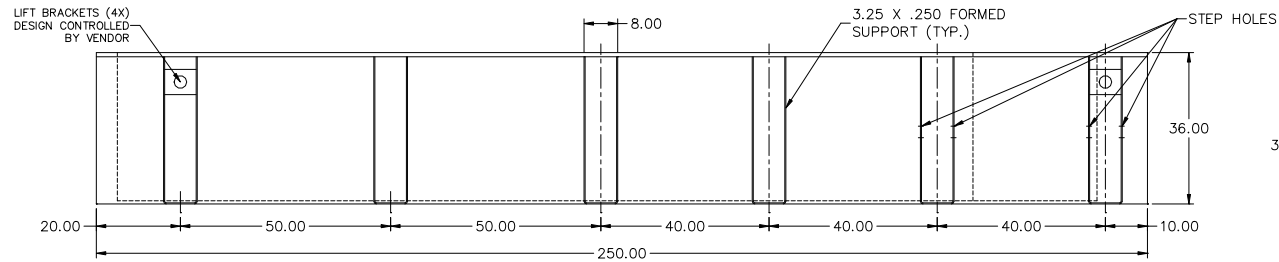
DRAWING:

3-0421

**72HR TANK**  
**JD350, JD415**  
**TD350, TD400**  
**VD350, VD400 (FT4)**  
**LV0/LV1/LV2/LV3**



STEP HOLE DETAIL



## NOTES:

1. MATERIAL: 7GA. OUTSIDE  
7GA. INSIDE
2. SECONDARY CONTAINMENT TANK
3. FINISH PAINT GLOSS BLACK
4. TANK TO INCLUDE
  - FUEL SUPPLY / RETURN DIP TUBES
  - LIFTING / TIE DOWN BRACKETS

APPROXIMATE WEIGHT: 5600 LBS

## REVISIONS:

LEVEL:	DESCRIPTION:	DATE:	BY:
02	MOVE E-VENT	07-05-17	KAP
01	ADD PN TO DRAWING - UPDATE DIMENSIONS	12-08-16	KAP

**BLUE STAR**  
**Power Systems Inc.**

TANK SB 2130 GL DW UL W/STUB-UP

P/N: 20641 250"L X 72"W X 36"H

DATE: 07-05-17

BY: KAP

DRAWN TO SCALE