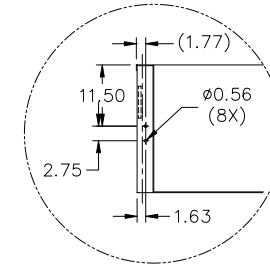
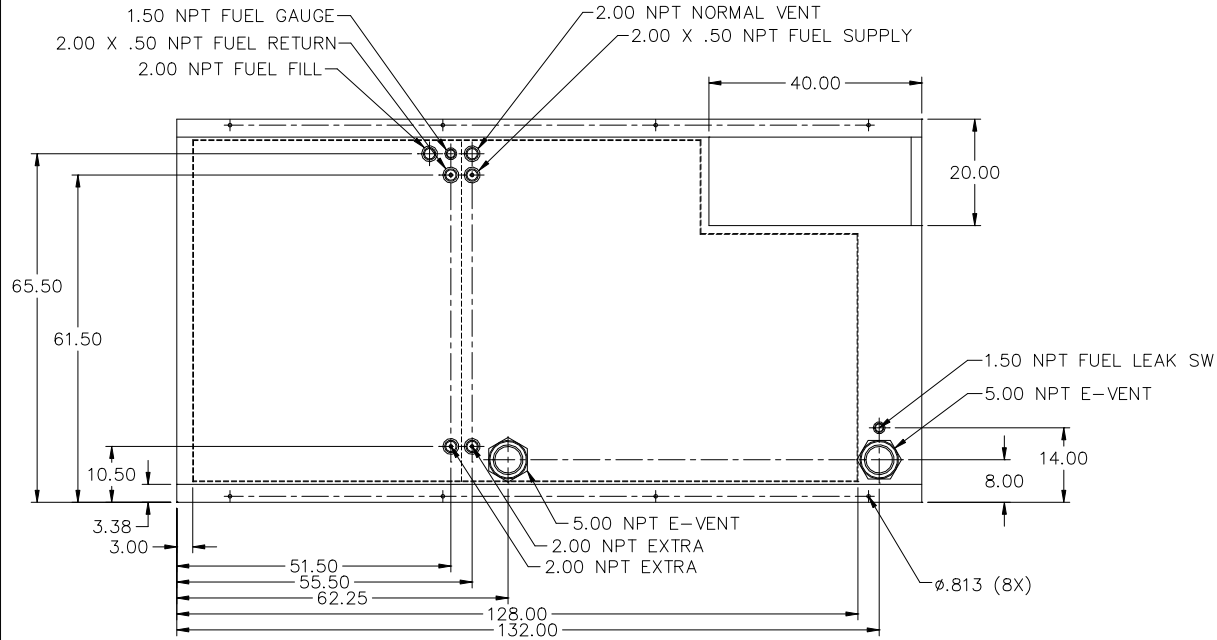
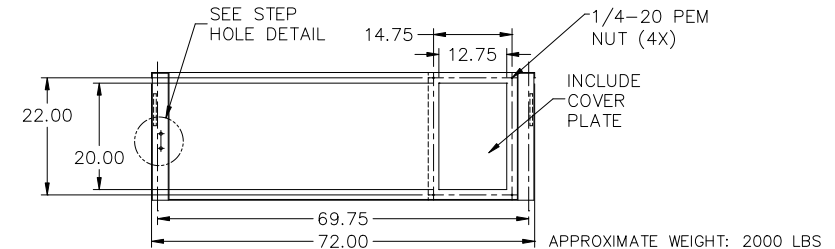
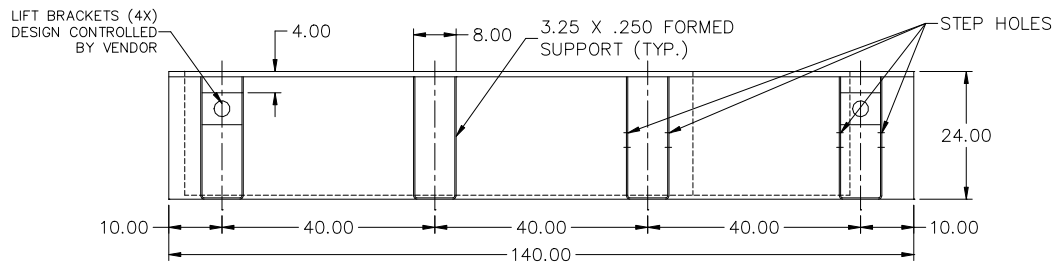


24HR TANK
JD350, JD415
VD350, VD400 (FT4)
TD350, TD400
LV0/LV1/LV2/LV3



STEP HOLE DETAIL



NOTES:

1. MATERIAL: 10GA
2. SECONDARY CONTAINMENT TANK
3. FINISH PAINT GLOSS BLACK
4. TANK TO INCLUDE
 - FUEL SUPPLY / RETURN DIP TUBES
 - LIFTING / TIE DOWN BRACKETS

REVISIONS:

LEVEL:	DESCRIPTION:	DATE:	BY:
NA	NA	NA	NA

BLUE STAR
 Power Systems Inc.

TANK SB 710GL DW UL W/STUB-UP

P/N: **TBD** **140"L X 72"W X 24"H**

DATE: **07-05-17**

BY: **KAP**

DRAWN TO SCALE